

Fastrack is one of the most comprehensive fast-delivery washroom ranges available.

Including cubicle, ducting and vanity unit, Fastrack is a stylish, durable and economical washroom for dry areas, delivered box packed for easy handling.

Panels are cut to size on-site and edges concealed in continuous channels.

Fastrack

A complete off-the-shelf washroom in 48 hours*



- 6 colour options for all panels
- Children's door option
- Enlarged and ambulant cubicle options



Fastrack Washroom in Blue and Cream.

* Please note delivery is working days only

Fastrack cubicle



↳ Performance

MFC

↳ Service

Fastrack

↳ Colour

6 colour options
for all panels

↳ Pilasters

Square edge with matching
1mm PVC lipping

Postformed radius edge in HPL

↳ Fittings

Dark Grey

↳ Privacy

150mm floor clearance

↳ Heights

Overall 1950mm

A stylish and economical cubicle featuring durable dark grey fixtures and fittings.

A choice of square edge or postformed pilasters is available as well as a children's height door and the option of enlarged and ambulant cubicles.

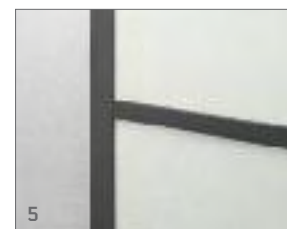
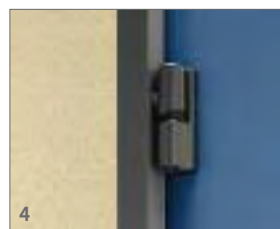
1 Cubicles in Cream with
Blue pilasters

2 Headrail

3 Leg

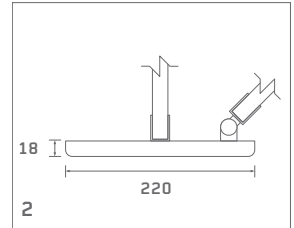
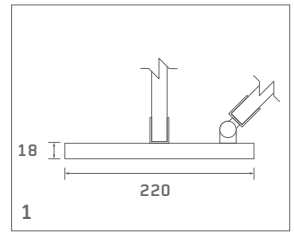
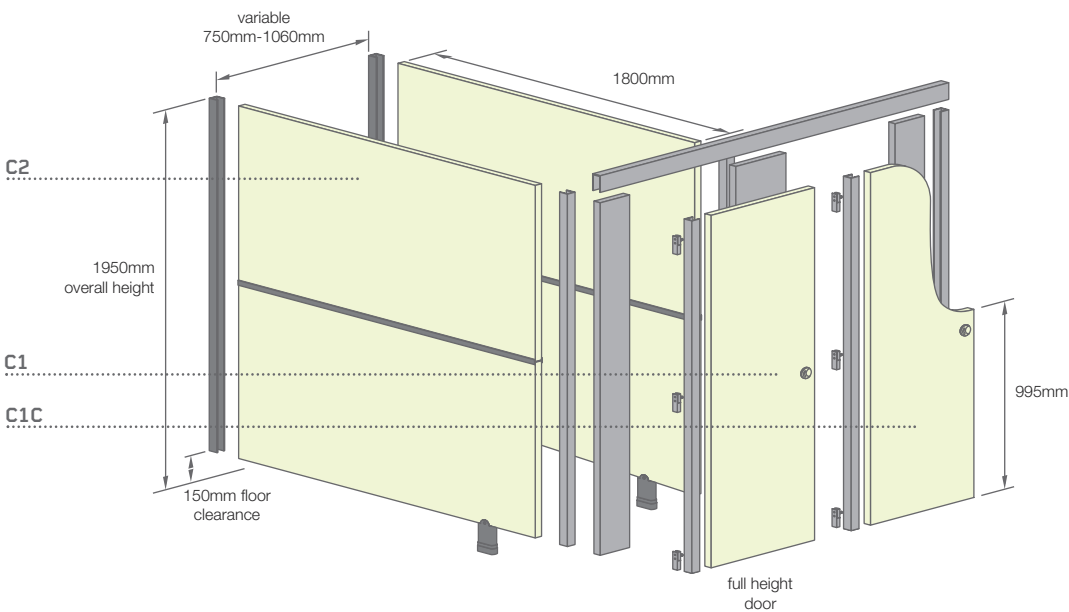
4 Hinge

5 Wall channel and H section



Fastrack cubicles

- All components delivered to standard dimensions, boxed and clearly labelled
- Partitions and doors can be cut to size on site and edges concealed in channels
- Channels accommodate out of line walls
- Packs inclusive of detailed installation instructions



- 1 Square edged pilaster section in MFC
- 2 Postformed pilaster section in HPL

C1 Door Pack with Square Edge Pilaster

Outward opening/inward opening Wheelchair, Ambulant and Enlarged

- 1 door 1800 x 900mm
- 1 pilaster 1800 x 220mm
- 1 pilaster drilled for hinge 1800 x 115mm
- 1 pilaster no hinge 1800 x 115mm
- 1 pilaster for enlarged cubicle drilled for hinge 1800 x 400mm
- 3 UPVC door cap/wall channels 1800mm
- 1 Aluminium headrail – Dark Grey 1800mm

C1P Door Pack with Postformed Pilaster

Contents as C1 Pack but pilasters are Postformed.

C1C Children's Door Pack with Square Edge Pilaster

- 1 door 1800 x 900mm
- 1 pilaster 1800 x 220mm
- 1 pilaster drilled for hinge 1800 x 115mm
- 1 pilaster no hinge 1800 x 115mm
- 1 pilaster for enlarged cubicle drilled for hinge 1800 x 400mm
- 3 UPVC door cap/wall channels 1800mm
- 1 aluminium headrail – Dark Grey 1800mm

C1CP Children's Door Pack with Postformed Pilaster

Contents as C1C Pack but pilasters are Postformed.

C2 Partition Pack

- 2 partitions "halves" 900 x 1800mm
- 1 UPVC H section 1750mm
- 1 UPVC door cap/wall channel 1800mm

C3 Inline Pack with Square Edge Pilaster

- 1 large pilaster 1800mm x 900mm
- 1 pilaster drilled for hinge 1800 x 550mm
- 1 aluminium headrail – Dark Grey 1800mm

C3P Inline Pack with Postformed Pilaster

As C3 Pack but pilasters are Postformed.

C1FB Fittings Pack

- 1 ABS indicator bolt
- 1 outward keep
- 3 hinges Dark Grey
- 1 toilet roll holder
- 1 coat hook
- 2 aluminium pedestals
- Screws, plugs + channel through fixings

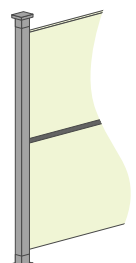
GR1 Ambulant/Enlarged Grab Rail Pack

- 3 grab rails - White powder coated 600mm
- 2 door opening bars 300mm – Dark Grey powder coated
- 1 fixing pack complete

C4 Floor to Ceiling Post

Required when ordering free standing cubicles.

- 1 floor to ceiling post 3750mm
- 2 flanges
- 1 UPVC door cap/wall channel 1800mm
- Screws, plugs + channel through bolt fixings



Fastrack duct panels

Fastrack duct panels can incorporate most standard sanitaryware items.

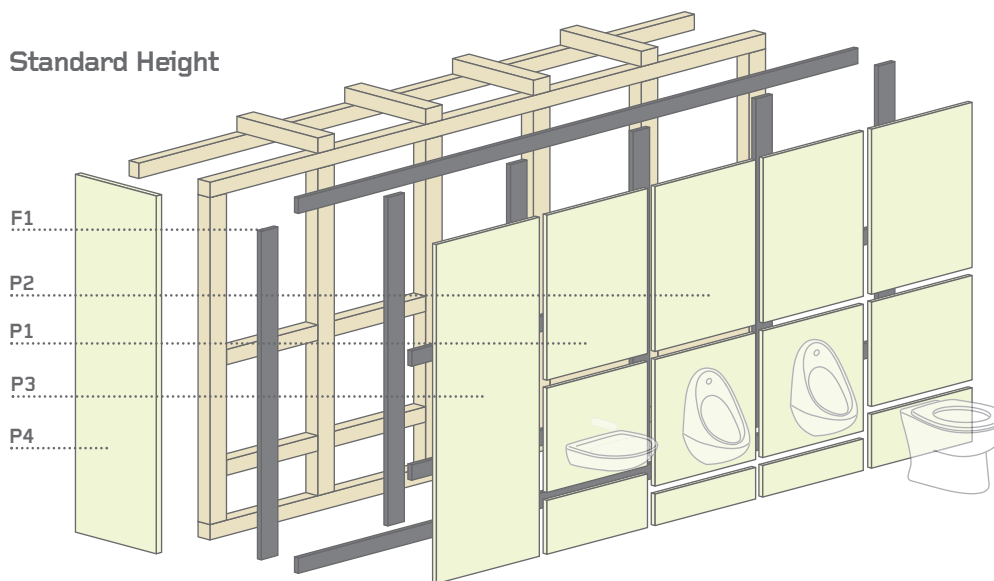
- All components delivered to standard dimensions, boxed and clearly labelled
- Duct widths and heights can be varied by adjusting width of flashgaps
- Installer to provide appropriate timber frame to support duct panels (typically 50mm x 50mm softwood frame)
- Packs inclusive of detailed installation instructions

→ **Performance**
MFC

→ **Service**
Fastrack

→ **Colour**
6 colour options for all panels

Standard Height



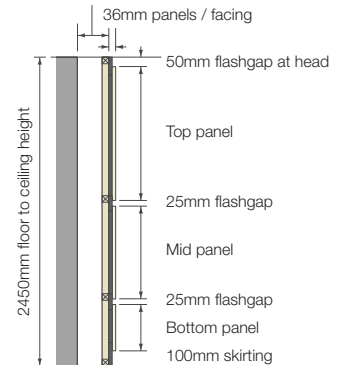
→ **Panels and flashgaps**

Square edge with matching 1mm PVC lipping

→ **Fittings**

Lift off clips

Duct depth to suit application



F1 Flashgap Pack

- 2 flashgaps – unedged 2600 x 200mm
- 1 flashgap – edged 2600 x 201mm
- 16 shrinkage plates + screws

P1 Washbasin/WC Panel Pack

- 1 bottom panel 405 x 700mm
- 1 middle panel 670 x 700mm
- 1 top panel 1125 x 700mm
- 1 x 1mm PVC re-edging strip 2500mm
- 16 plastic clips + screws

P2 Urinal Panel Pack

- 1 bottom panel 225 x 700mm
- 1 middle panel 850 x 700mm
- 1 top panel 1125 x 700mm
- 1 x 1mm PVC re-edging strip 2500mm
- 16 plastic clips + screws

P3 Plain Panel

- 1 plain panel 2250 x 700mm
- 1 x 1mm PVC re-edging strip 2500mm
- 10 plastic clips and screws

P4 Plain Panel

- 1 plain panel 2250 x 300mm
- 1 x 1mm PVC re-edging strip 2500mm
- 10 plastic clips + screws

Shelf Height

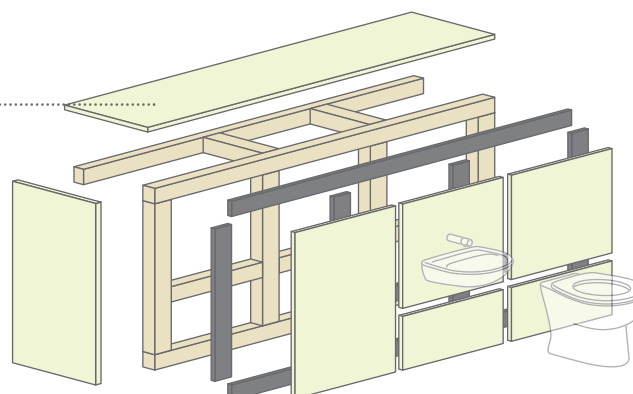
P4 Plain Panel

- 1 2250 x 300mm full panel

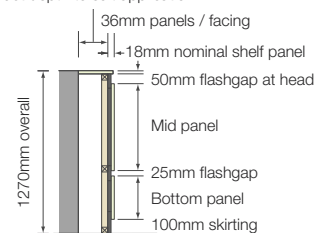
Plain Panel/Return End

- 1 2250 x 300mm full panel

P4



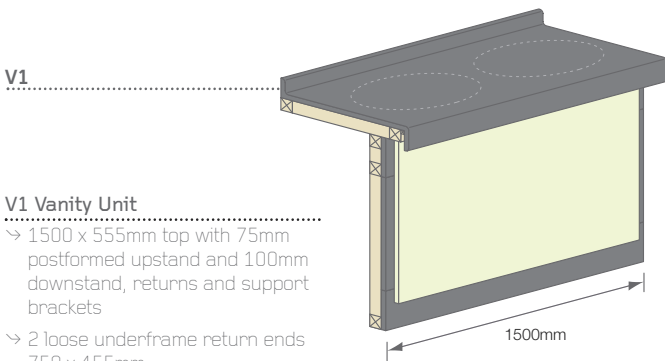
Duct depth to suit application



All sanitaryware to be supplied by others

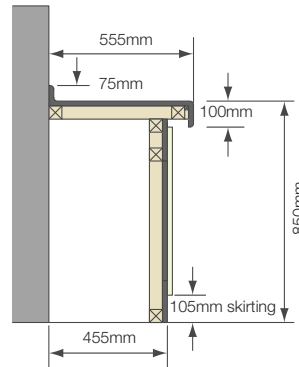
Fastrack vanities

- All components delivered to standard dimensions, boxed and clearly labelled
- For longer lengths units can be butt jointed/cut to length on site
- Packs inclusive of detailed installation instructions



V1 Vanity Unit

- 1500 x 555mm top with 75mm postformed upstand and 100mm downstand, returns and support brackets
- 2 loose underframe return ends 750 x 455mm
- 1 1380 x 645mm under panel
- Clips and screws
- 3 unedged flashgaps 1300 x 200mm
- 1 x 1mm PVC re-edging strip 1000mm
- Fixing brackets and screws



- **Performance**
Vanity top: HPL
Vanity underpanel: MFC

- **Service**
Fastrack

- **Colour**
6 colour options for all panels

- **Upstand**
Integral upstand

- **Dimensions**
Length 1500mm
Bed Depth 555mm
Downstand 100mm

All Sanitaryware to be supplied and fitted by others.

Fastrack colours



Blue LRV 19.2 **Green** LRV 41.0 **Cream** LRV 75.7 **Light Grey** LRV 43.4



Dark Grey LRV 12.3 **Warm Oak** LRV 34.5 **Faceplate** Dark Grey

Our colours are graded with a light reflectance value (LRV) to help ensure your washroom complies with current legislation.*

* contact your local access control officer

Cubicle fittings



Nylon Toilet roll holder



Nylon Coat hook



Internal Grab rail



Exterior door handle

See accessories page for more details.

A step by step guide to selecting your Fastrack Washroom packs.

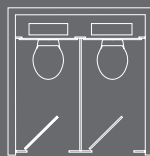
Call our friendly sales team who will help to process your order on 01933 303160.

➔ 1 Cubicle selection

- ➔ Identify the layout of the cubicles you require from these four options and refer to the table next to it.
- ➔ Identify the number of cubicles you require along the top row of the grid.
- ➔ Read down the column to determine the pack and quantity you require.

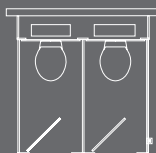
Between walls

No. cubicles	1	2	3	4	5	6	7	8
Door pack	1	2	3	4	5	6	7	8
Fittings pack	1	2	3	4	5	6	7	8
Partition pack	0	1	2	3	4	5	6	7
Floor/ceiling post pack	0	0	0	0	0	0	0	0
Max. width (mm)	1060	2120	3180	4240	5300	6360	7420	8480



Freestanding

No. cubicles	1	2	3	4	5	6	7	8
Door pack	1	2	3	4	5	6	7	8
Fittings pack	1	2	3	4	5	6	7	8
Partition pack	2	3	4	5	6	7	8	9
Floor/ceiling post pack	1	1	1	2	2	2	2	2
Max. width (mm)	1060	2120	3180	4240	5300	6360	7420	8480



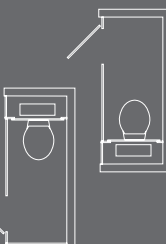
Against walls

No. cubicles	1	2	3	4	5	6	7	8
Door pack	1	2	3	4	5	6	7	8
Fittings pack	1	2	3	4	5	6	7	8
Partition pack	1	2	3	4	5	6	7	8
Floor/ceiling post pack	0	0	0	0	0	0	0	0
Max. width (mm)	1060	2120	3180	4240	5300	6360	7420	8480



Inline cubicles

	Between walls	Against walls
No. cubicles	1	1
Door pack	1	1
Fittings pack	1	1
Partition pack	0	1
Inline pack	1	1
Max. length (mm)	2000	2000



Min. cubicle width 750mm

Options

- ➔ Children's door instead of standard door pack
- ➔ Door packs and in-line packs available with square edge pilaster or postformed pilaster
- ➔ Ambulant/enlarged grab rails and door opening bars are available separately.

➔ 2 Ducting selection

- ➔ For each range of panels determine how many you want of each type.
- ➔ Check they will fit in the space available.

Please note: Always leave a vertical gap 25mm wide between a panel and a wall. Leave a 25mm wide vertical gap between each panel. For WC panels, leave 50mm for fixing a cubicle partition. Plain panel packs P3 and P4 can be cut down and re-edged on site to cater for ranges that do not accommodate 700mm modules.

For more information on junction details visit our website www.bushboard-washrooms.co.uk

Please note for each panel you will need one flash gap pack.

➔ 3 Vanity selection

- ➔ Determine how many vanity basins you require in each top

1500mm long top	Up to 2 basins	Pack V1
-----------------	----------------	---------

- ➔ Check that the vanity top will fit into the available space
- ➔ The vanity pack includes under panel, return end, flashgap and a fixing kit.
- ➔ Supporting timber framework to be supplied by site